

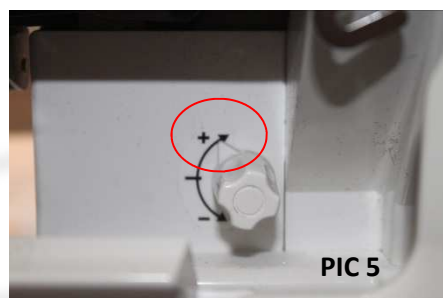
Techniques

baby lock

Gathering using the Gathering Foot

The Gathering Foot is a fast and efficient way of achieving a perfect gather whilst attaching to the base fabric all in one motion. For best results use light to medium weight woven fabric which are cut the width of the fabric, selvage to selvage.

- Attach gathering foot to overlocker
- Stitch length 4
- Stitch width 7.5
- Stitch selector A (Eclipse and Enspire tensions all on 4)
- Increase differential feed , 2 will result in a 2 to 1 gather with most woven fabrics.
- Place the frill piece right side up, under the foot on top of the feed teeth all the way to the needles. Place the piece being gathered to through the slot in the top of the foot right sides down, all the way up to the needles. (pic 2)
- Stitch, guiding the fabric to the right, do not hold the fabric as this will result in flat spots and uneven gathering.
- Occasionally the overlocking will appear loopy after when using the gathering foot (pic 4) this can be adjusted by turning the fine tuning screw towards the + (pic 5)
- This corrects the looping, resulting in balanced even overlocking (pic 6)



baby lock

www.babylock.com.au

ph: 03 9339 7777